

# THE PAVILION

*at Ingliston.*



# WELCOME TO THE PAVILION

The Pavilion is a stunning event space, a spectacular new contemporary venue. It's a large open space filled with natural light due to the large windows that compose it.

The building architecture is completed by a roofed veranda and green steps that lead to a beautiful green lawn overlooking the main ring.

We can host all types of corporate events like meetings, conferences, exhibitions, or award dinners, among others.



# ROOMS AND CAPACITIES

The Pavilion is a luminous white canvas full of possibilities, the main room is formed by two event spaces, which can also be combined or used in conjunction with each other, creating an endless number of possible layouts for your event.

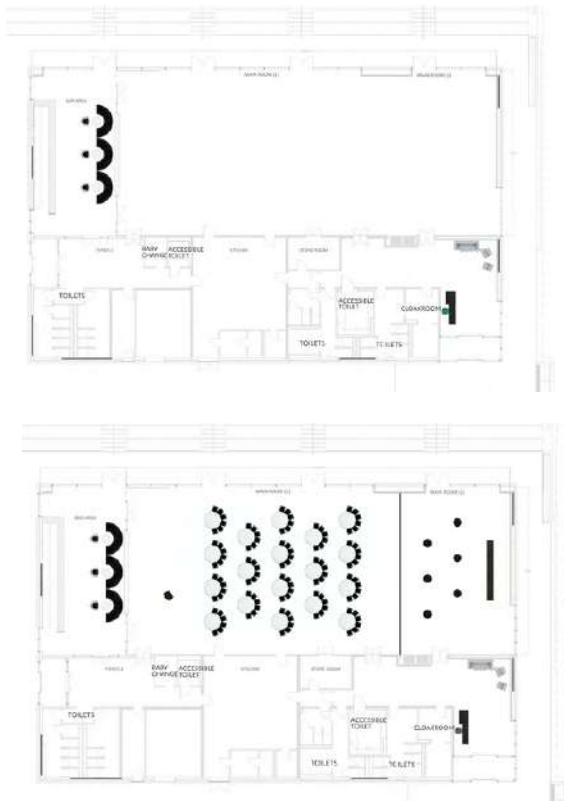
Our events team would be happy to discuss the various setup options available to you, including boardroom, banquet, and conference layouts.

The venue also has a fully equipped bar that could be used during the event (stocking to be discussed with the caterer).

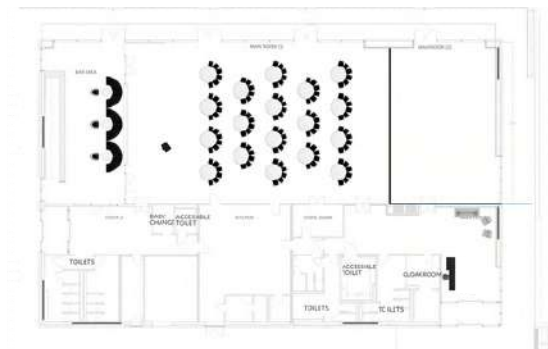
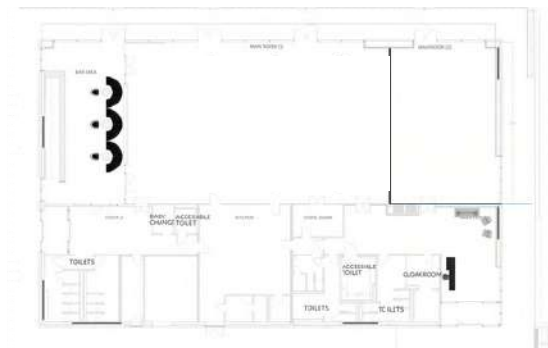
	Full Suite	West Suite	East Suite
Theatre	400	250	100
Classroom	190	128	60
Boardroom	-	3x30	30
Banquet	300	200	100
Cabaret	200	160	60
Reception	450	400	100
Floor Area	520.2 m2	375 m2	142.5 m2



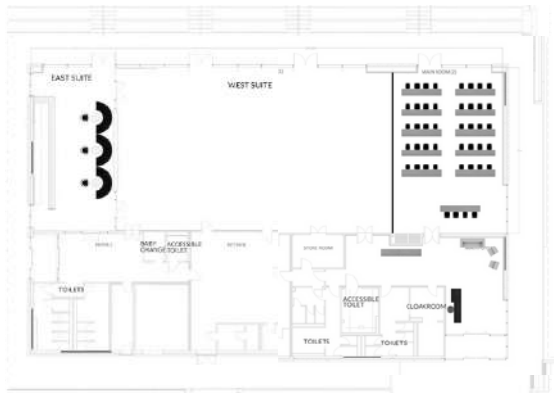
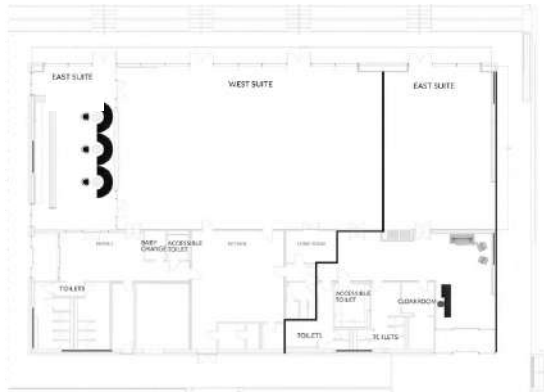
## EXCLUSIVE USE



## WEST SUITE



# EAST SUITE





# ACCESSIBILITY

## Entrance Ease

Our building boasts level access at both entrances, ensuring a welcoming entry for everyone.

## Inclusive facilities

From the East Foyer's 4.5 x 3.5m accessible toilet and Changing Place to the West Foyer's 3 x 2m accessible toilet, we prioritize your comfort. Additionally, every toilet block in the building incorporates an accessible toilet.

## Lawn Access

Unwind on the lawn via the West Foyer, offering direct outdoor accessibility.

## Parking Proximity

Benefit from accessible parking in two areas, ensuring hassle-free access to the building.



# VENUE HIRE PACKAGE

## Full Venue Access

Agreed use of The Pavilion & Lawn for your event, with flexible suite hiring options.

## Convenient Parking

Complementary use of The Pavilion Car Park

## Personal Event Coordination

Dedicated Event Manager

## Seamless Connectivity

Reliable standard WIFI connection

## Effortless Setup

Pre-furnished, ready-to-use arrangement with in-stock furniture.

## Cutting-Edge AV

The in-house setup includes a ceiling-suspended projector, a 4.06m x 3.54m screen and microphones.

## Atmospheric Ambiance

Set the mood with a Bluetooth music connection.

## Family-Friendly

Dedicated baby changing room.

## Engaging Welcome

Foyer Welcome TVs for important information.





## WHERE WE ARE

Nestled in an ideal location for any event, The Pavilion enjoys a prime position just a 10-minute walk from the airport. The site is seamlessly connected to existing airport links, with direct buses from Edinburgh and Glasgow, alongside the convenience of two nearby tram stops. At The Pavilion, we provide easy access for your event needs.



## CONTACT

Ines Saenz de Miera  
Phone: 07706336232  
Email: [iness@rhass.org.uk](mailto:iness@rhass.org.uk)



# THE PAVILION

*at Inghliston.*



MAKE THE MOST OF YOUR NEXT EVENT AT  
THE PAVILION AT INGLISTON.

THE PAVILION *at Ingleston*





THE PAVILION *at Ingliston*



THE PAVILION *at Ingliston*





THE PAVILION *at Ingliston*





THE PAVILION *at Ingliston*



THE PAVILION *at Ingliston*

